

Interflo 6030 Direct-to-stud 4-piece Alcove Shower Wall Kit

Model number:

107818-000-001-000

Dimensions: 59.875" x 30" x 73"

Installation: Direct-to-Stud

Material: Acrylic



MADE IN CANADA 

Standard Colors:



White

Standard Features:

- Ensure a seamless, caulk-free shower installation by pairing this shower wall set exclusively with the Interflo shower base – walls are designed to work only with t...
- Lightweight multi-piece design for easy handling and fast installation making it ideal for DIY projects
- 1-person installation capability saves time and labor costs, a big benefit for contractors or homeowners tackling bathroom upgrades
- Features a smooth, non-fiberglass backing that makes it easy to handle.

Product characteristics:

- Direct-to-Stud Installation
- Multi-Piece Unit
- Economical Solution

Code Compliant:



MAAX products adhere to one or more of the following certification

MAAX

Interflo 6030 Direct-to-stud 4-piece Alcove Shower Wall Kit

Model number:

107818-000-001-000

Dimensions: 59.875" x 30" x 73"

Installation: Direct-to-Stud

Material: Acrylic

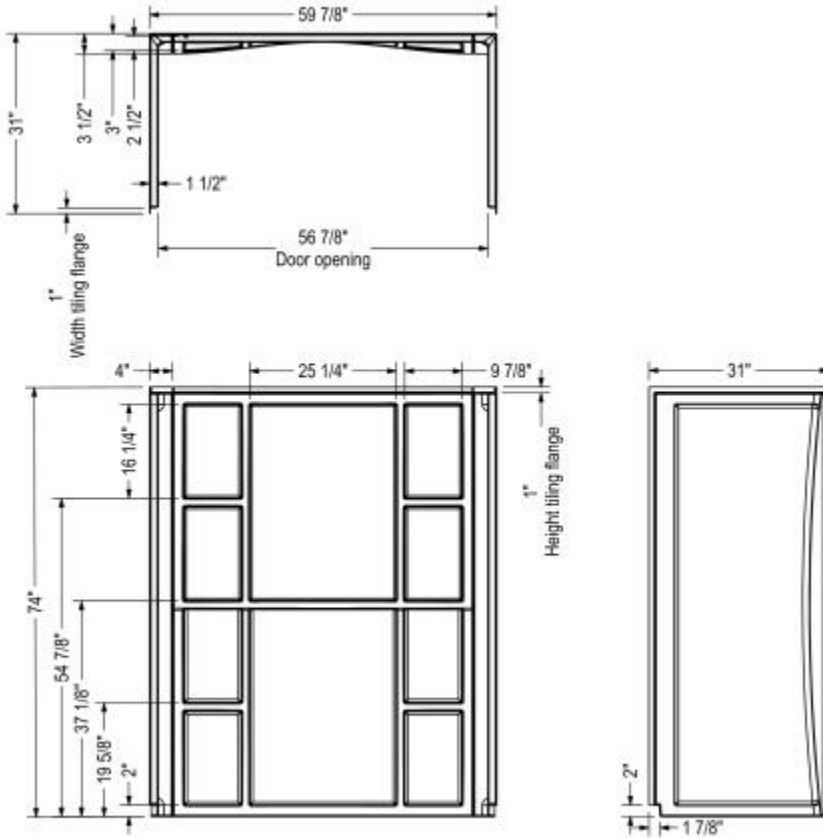
STANDARD

Dimensions

60 x 30 x 73 In.
(1521 x 762 x 1854 mm)

Weight

48 lbs - 22 kg



- Dimensions are approximate. Unit dimensions should be checked before installation.
- Installation must be carried out according to the manufacturer's instructions.

Project:

Contractor:

Representative:

Date:

Tel:

Notes:

MAAX

