

PIA 3260 IFS AFR CORNER

60 3/8" x 31 7/8" x 19 3/4" Bathtub



OPTIONS

COLOR(S)	CONFIGURATION(S)	SIZE(S)	SYSTEM(S)
White	Left Drain / Corner Left	60 x 30	Activ-Air
	Left Drain / Corner Right	60 x 32	Soaker - no system
	Right Drain / Corner Left	60 x 36	
	Right Drain / Corner Right	72 x 32 72 x 36	

FEATURES

- Acrylic surface resistant to stains
- Corner installation
- Leveling legs for an easy installation
- Above-the-floor rough (AFR) so pipes can be routed without breaking ground or relocating the drain
- Double-sided tiling flange and 19.875 in. skirt integrated to the bathtub
- Available in left-hand or right-hand drain configuration
- Thermoformed acrylic reinforced with fiberglass for a durable bathtub
- Activ-Air bathtub system available
- Standard round drain

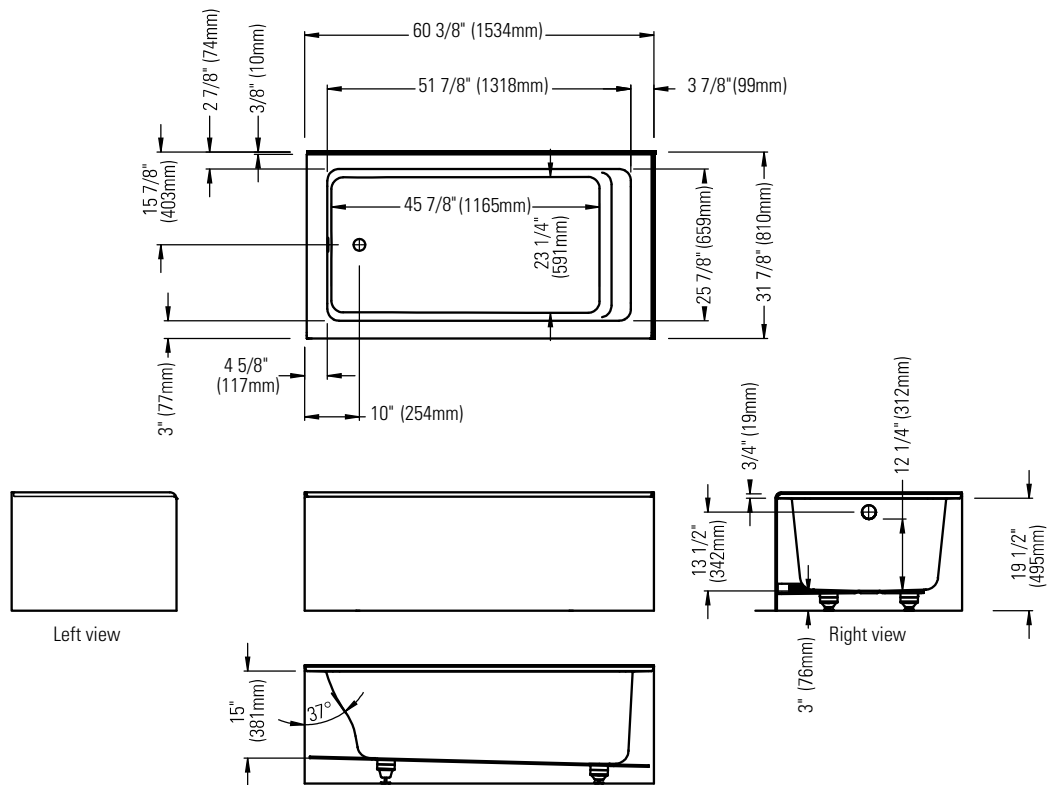
ATTRIBUTES

- Installation Type : Corner
- Above-the-Floor Rough : Yes
- Material : Acrylic
- Residential Warranty : 25
- Commercial Warranty : 1 Year





PIA 3260 L2R AFR
Bathtub

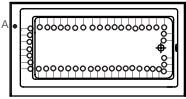


*All dimensions are approximate and subject to change without notice.
Please refer to the installation guide before beginning the installation

DIMENSIONS

PRODUCT LENGTH	BATHING WELL LENGTH	PRODUCT WIDTH	BATHING WELL WIDTH	PRODUCT HEIGHT
60 3/8"	45 7/8"	31 7/8"	23 1/4"	19 3/4"
DEEP SUMP HEIGHT	DECK WIDTH	SKIRT HEIGHT	WEIGHT	DRAIN SIZE
12 1/4"	3"	19 3/4"	90 Lbs	2"
DRAIN CLEARANCE	SHIPPING LENGTH	SHIPPING WIDTH	SHIPPING HEIGHT	
1"	33 1/2"	20 1/4"	63 1/4"	

SYSTEMS



Activ-Air left drain
Activ-Air right drain

Included: 32 Activ-Air micro-jets, one blower with heating element (200 W) and one pneumatic control.

Project: _____

Contractor: _____

Representative: _____

Date: _____

Tel: _____

Notes: _____
