

0.5GPF Low Consumption Washout Urinal

FEATURES

- Compact urinal with concealed integral trap
- Washout flush action with 3/4" top spud inlet
- 0.5 GPF with any flush valve shown below
- Designed for reclaimed water use

MODELS

- UT447EX
Urinal with 3/4" top spud inlet

ADDITIONAL ITEMS

- THU3017
Stainless Steel Urinal Drain Cover

EcoPower® Flush Valves (0.5 GPF)
Exposed
TEU1LAX12#CP

COLORS/FINISHES

- Standard
#01 Cotton

PRODUCT SPECIFICATION

The wall-mounted, ADA compliant, low consumption washout urinal shall be 0.5GPF/1.9LPF when paired with a 0.5GPF flushometer valve. Urinal specified shall be model UT447EX_____.



CODES/STANDARDS

- Meets and exceeds ASME A112.19.2/CSA B45.1,
- Certifications: IAPMO(cUPC), State of Massachusetts
- Code compliance: UPC, IPC, NSPC, NPC Canada, and others
- ADA compliant



UT447EX

0.5GPF Low Consumption Washout Urinal

SPECIFICATIONS

Water Use	0.5GPF/1.9LPF
Flush System	Washout flush action
Warranty	One Year Limited Warranty
Material	Vitreous China
Min. Water Pressure	15 psi (Flowing)
Height (Urinal Only)	27-3/16"
Width	18"
Rim	14"
Shipping Weight	60lbs
Shipping Dimensions	29-7/8" L x 16-3/4" W x 19-1/8" H

INSTALLATION NOTES

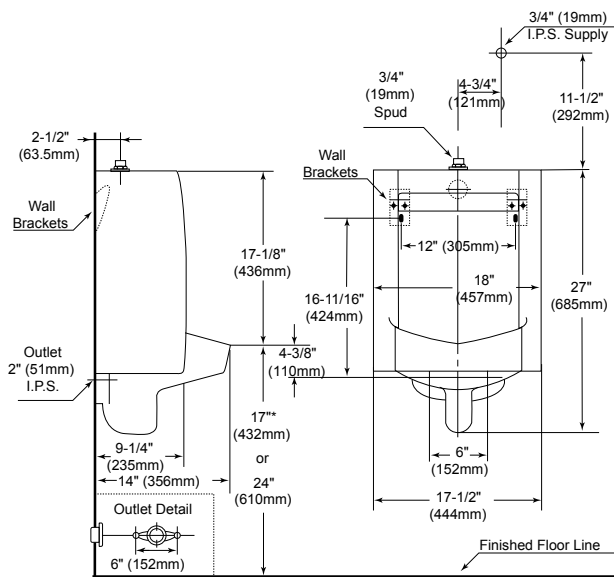
RECLAIMED WATER QUALITY PARAMETERS	
Chloride Ion Concentration	< 600mg/L
pH	5.8~8.6
Free Carbonate	< 50mg/L
Langelier's Index	> -3.00
Nitrate Ion Concentration	< 60mg/L
Conductivity	< 250mS/m
Sulfate Ion Concentration	< 100mg/L
Residual Chlorine Concentration	< 2mg/L
Hydrogen Sulfide Gas	None Existence
Suspended Solids	< 5mg/L

Adjust angle stop accordingly to prevent overflow.
Confirm with local codes and standards for floor drain requirement.

TOTO Reclaimed Water flush valves are designed to perform best when used with TOTO Reclaimed Water urinals/toilets and components. Although TOTO Reclaimed Water products may be used in combination with other reclaimed water product brands, optimal performance might be impaired and attempted use with any non-compliant reclaimed water product(s) could result in corrosion, leakage or void the warranty.

DIMENSIONS

UT447EX



*For ADA installation refer to local codes

TOTO

These dimensions and specifications are subject to change without notice