

0.125GPF High-Efficiency Washout Urinal

FEATURES

- Compact urinal with concealed integral trap
- Washout flush action with 3/4" top spud inlet
- Complete with low profile dome strainer
- Optional CEFIONTECT® ceramic glaze - CEFIONTECT glaze prevents debris and mold from sticking to ceramic surfaces, leading to fewer chemicals.
- Designed for reclaimed water use

MODELS

- UT105UX
Urinal with 3/4" top spud inlet
- UT105UGX
Urinal with 3/4" top spud inlet and CEFIONTECT

ADDITIONAL ITEMS

EcoPower® Flush Valves (0.125 GPF)
Exposed
TEU1UAX12#CP



COLORS/FINISHES

- #01 Cotton (CEFIONTECT optional)

PRODUCT SPECIFICATION

The wall-mounted, ADA compliant, high-efficiency washout urinal shall be 0.125GPF/0.47LPF when paired with a 0.125GPF flushometer valve. Urinal shall have optional CEFIONTECT ceramic glaze. Urinal specified shall be model UT105U(G)X__.

CODES/STANDARDS

- Meets and exceeds ASME A112.19.2/CSA B45.1,
- Certifications: IAPMO(cUPC), State of Massachusetts, City of Los Angeles
- Code compliance: UPC, IPC, NSPC, NPC Canada, and others
- Legislative Compliance: California AB715, CALGreen Title 24, California Energy Commission Standards
- ADA compliant



UT105U(G)X

0.125GPF High-Efficiency Washout Urinal

SPECIFICATIONS

Water Use	0.125GPF/0.47LPF
Flush System	Washout flush action
Warranty	One Year Limited Warranty
Material	Vitreous China
Min. Water Pressure	15 psi (Flowing)
Height (Urinal Only)	21-3/4"
Width	12-1/4"
Rim	14"
Shipping Weight	37.5lbs
Shipping Dimensions	24" L x 13-3/4" W x 17" H

INSTALLATION NOTES

RECLAIMED WATER QUALITY PARAMETERS	
Chloride Ion Concentration	< 600mg/L
pH	5.8-8.6
Free Carbonate	< 50mg/L
Langelier's Index	> -3.00
Nitrate Ion Concentration	< 60mg/L
Conductivity	< 250mS/m
Sulfate Ion Concentration	< 100mg/L
Residual Chlorine Concentration	< 2mg/L
Hydrogen Sulfide Gas	None Existence
Suspended Solids	< 5mg/L

Install this product according to the installation guide.

Refer to manufacturer's instructions and local codes for flushometer requirements.

Will comply with ADA when installed per Section 605 - Urinals of the ADA 2010 Accessible Design Standard with maximum rim height of 17" and minimum depth of 13-1/2".

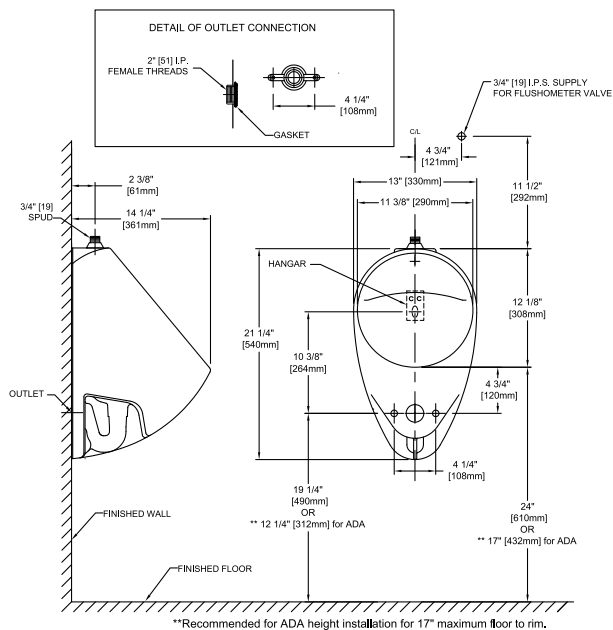
Will comply with CSA B651 when installed per Clause 6.2.8 Urinals of the CSA 2012 Accessible Design Standard with maximum rim height of 17" and minimum depth of 13-1/2".

Ultra-low high efficiency urinals require a system with a minimum 2% slope. Maximum drainage capacity rated at 6.6 gal/min (25 L/min). Adjust angle stop accordingly to prevent overflow. Confirm with local codes and standards for floor drain requirement.

TOTO Reclaimed Water flush valves are designed to perform best when used with TOTO Reclaimed Water urinals/toilets and components. Although TOTO Reclaimed Water products may be used in combination with other reclaimed water product brands, optimal performance might be impaired and attempted use with any non-compliant reclaimed water product(s) could result in corrosion, leakage or void the warranty.

DIMENSIONS

Top Spud Installation



TOTO

These dimensions and specifications are subject to change without notice