

### Features

- Two lever handles offer separate control of hot and cold water
- Part of the Occasion bathroom faucet and accessory collection
- Requires valve (sold separately) for installation

### Material

- Premium metal construction for durability and reliability

### Installation

- Wall-mount

### Required Products/Accessories

K-410-K Wall-mount Valve  
K-T27011-ND Wall-mount bathroom sink faucet spout with Straight design, 1.2 gpm

### Recommended Products/Accessories

K-23726 Drain treatment  
K-23723 Faucet cleaner



ADA CSA B651 OBC

### Codes/Standards



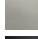



ASME A112.18.1/CSA B125.1  
ADA  
ICC/ANSI A117.1  
CSA B651  
OBC  
IAPMO Certification

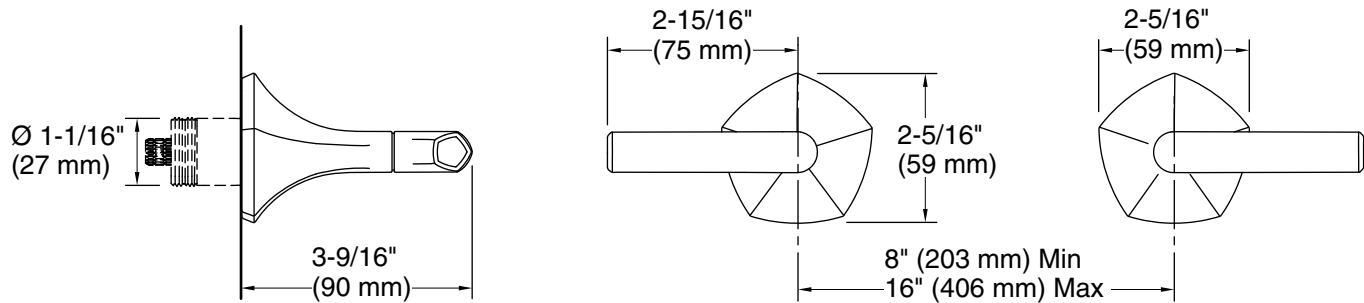
### KOHLER® Faucet Lifetime Limited Warranty

See website for detailed warranty information.

### Available Colors/Finishes

*Color tiles intended for reference only.*

| Color   | Code | Description                    |
|---|------|--------------------------------|
|  | CP   | Polished Chrome                |
|  | SN   | Vibrant® Polished Nickel       |
|  | BN   | Vibrant® Brushed Nickel        |
|  | BL   | Matte Black                    |
|  | 2MB  | Vibrant® Brushed Moderne Brass |
|  | BMB  | Matte Black with Moderne Brass |



## Technical Information

All product dimensions are nominal.

### Faucet:

Flow rate: 1.2 gal/min (4.5 l/min)

Pressure: 60 psi (4.1 bar)

Drain included: No

Drain with overflow: No

## Notes

ADA, OBC, CSA B651 compliant when installed to the specific requirements of these regulations.