

# CHELSEA

## WALL MOUNTED SINK

- 4610BHW Single Hole
- 4640BHW 4" Center

### PRODUCT SPECS:

- Vitreous china
- Front overflow hole
- Single hole or 4" faucet center
- Mounting hardware supplied
- Optional concealed arm carrier installation (supplied by others)
- Faucet not included

### DIMENSIONS:

485mm W x 450mm D x 220mm H  
 19 1/8" W x 17 3/4" D x 8 5/8" H

### COMPLIANCE CERTIFICATIONS

- Meets or exceeds the following:
- IAPMO cUPC
  - ASME A112.19.2 / CSA B45.1
  - ADA Guidelines & ANSI A117.1
  - NBC and OBC Section 3.8 Barrier Free design and CSA B651 Standard

### SHIPPING

Cube 1.97  
 GW 30 lbs

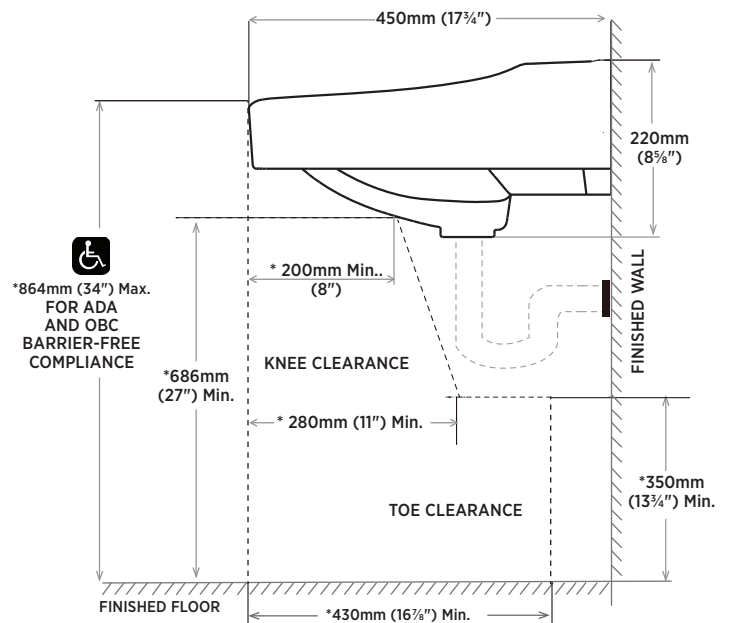
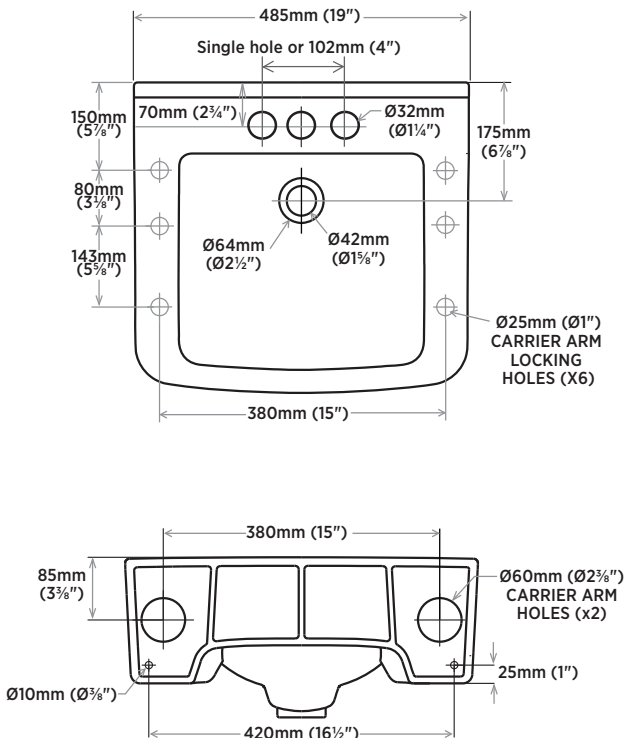


### TO BE SPECIFIED

Colour:  
 ■ Soft White

**NOTES:** Dimensions of fixtures are nominal and may vary within the range of tolerances established by ASME standard A112.19.2. These measurements are subject to change or cancellation. No responsibility is assumed for use of superseded or voided pages.

Products are designed to comply ADA/ANSI A117.1, CSA B651 standards and OBC barrier-free requirements. It shall be the responsibility of the installer to comply with the local disability codes and standards prior to installing the product.



NOTE: \* Starred measurements comply with ADA and OBC barrier free accessibility requirements.

REVISED JUNE 2020

**contrac**

5970 CHEDWORTH WAY, UNIT B, MISSISSAUGA, ONTARIO, CANADA L5R 4G5 | CONTRAC.CA