

# KDS 3232 AcrylX Alcove Four-Piece Shower

**Model number:**

145018-000-002-093

**Dimensions:** 31.875" x 32" x 76"

**Installation:** Alcove

**Material:** AcrylX™ Applied Acrylic



## Standard Features:

- Product available with Above-the-Floor Rough
- 4-piece shower with low threshold base
- Large top corner shelves, convenient footrests and acrylic handle 28
- Center drain
- Unique feature: PIN system for easy front installation
- All grab bars can support up to 300 lbs

## Standard Colors:



White

## Certifications

MAAX products adhere to one or more of the following certifications:



# MAAX

# KDS 3232 AcryIX Alcove Four-Piece Shower

**Model number:**

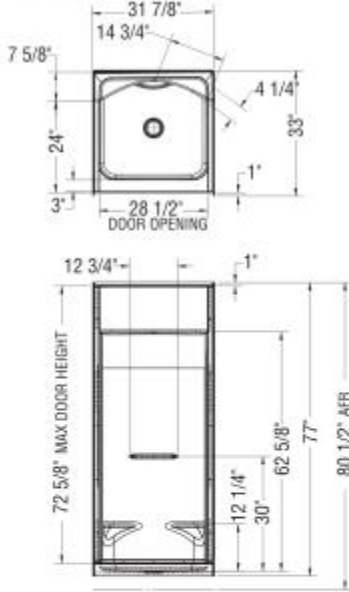
145018-000-002-093

**Dimensions:** 31.875" x 32" x 76"

**Installation:** Alcove

**Material:** AcryIX™ Applied Acrylic

**STANDARD**



**REINFORCEMENT BACKING**

OPTION 20212-R RIGHT WALL SHOWN  
OPTION 20212-L LEFT WALL SYMMETRICAL



**Dimensions**

32 x 32 x 76 In.  
(810 x 813 x 1930 mm)

**Weight**

122 lbs - 55 kg

**Shape**

Square

**Pieces**

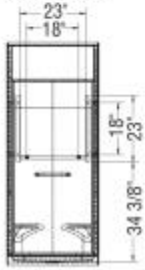
4

**Drain location:**

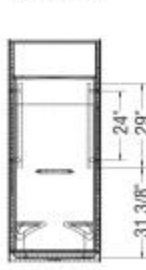
Center

**GRAB BARS**

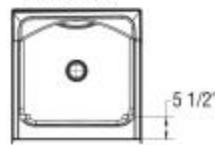
OPTION 20203



OPTION 20204



OPTION 20203-20204



All dimensions are approximate. Structure measurements must be verified against the unit to ensure proper fit.

Project:

Contractor:

Representative:

Date:

Tel:

Notes:

**MAAX**